

"Live a balanced life -
learn some
and think some
and draw some
and paint some
and sing and dance
and play and work
everyday some."

Robert Fulghum



For further information about
KinderDay or to register contact

Project Extend
P.O. Box 910
601 Deal Road
Oakhurst, NJ 07755
732-531-2600
www.oceanhsd.org



Project Extend
P.O. Box 910
Oakhurst, NJ 07755

Project Extend
PO Box 910, Oakhurst, NJ 07755
732-531-2600
pe@oceanhsd.org
www.oceanhsd.org

KinderDay

Kindergarten
enrichment
& child care
program

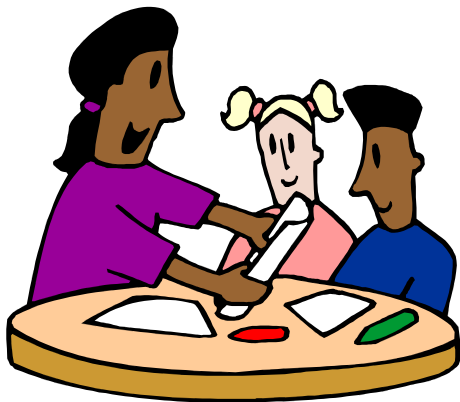


KinderDay

The program provides an exciting learning environment for children which extends the half day kindergarten program of the Township of Ocean School District.

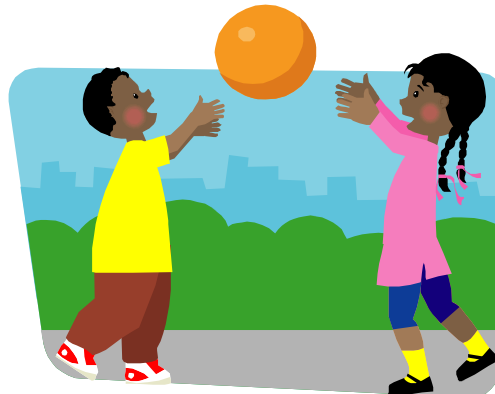
KinderDay is administered by Project Extend, the Township's School Aged Child Care Program that has provided exceptional care for children since 1986 in cooperation with the district and the Township of Ocean Department of Human Services.

KinderDay meets in your child's school, Ocean Twp. Elementary, Wanamassa & Wayside Schools.



More than a child care program, KinderDay is staffed by professional educators and provides activities designed to promote the educational and social development of your kindergarten child in cooperation with your child's Kindergarten teacher.

The program includes activities which support the school's teaching of language arts and communication skills, reading skills, and math skills development. The program provides guided social interaction, outdoor activities, art and music.



KinderDay will meet Mondays - Fridays corresponding to the Township of Ocean school calendar.

Additional Before and After care is available in Project Extend.

Children enrolled in KinderDay will be accepted in morning (7:00 - 8:45 a.m.) Project Extend at no additional fees.

If additional care is needed at the end of your child's school day, KinderDay participants may be enrolled in afternoon Project Extend (3:15 - 6:00 p.m.) at reduced rates.

Project Extend also offers care on most school holidays, half days and summer break.

Transportation: If additional child care is not needed families can utilize the transportation services as provided by the school district.

Fee Information:

Registration fee: \$40.00

Tuition: \$325.00/month*

*Pay full academic year tuition by August 1 and get June tuition free.

AM Project Extend: \$0.00

(Discounted from \$90.00/month, save \$900/year)

PM Project Extend: \$100.00/month

(discounted from \$190.00/month, save \$900/year).

See the registration agreement for specific fee information.